

# Training on Continuous Glucose Monitoring for HCPs and PWDs in Primary Care

Prepared by: Laura Stokes-Beresford, Senior Commissioning Manager for Diabetes  
Reviewed by: Dr Rahul Mohan, GP - Ruddington Medical Centre, Clinical Lead, GPwSI Diabetes  
Date updated: August 2023

*At the time of review the products that are currently supported by the specialist team within Notts ICB have been incorporated into this document. Other products are currently non-formulary within Notts ICB and are reviewed periodically.*

# Contents

<b>Training on rtCGM for HCPs in Primary Care</b> .....	3
<b>Setting Up LibreView in practices and PCNs</b> .....	5
Contact details for the Abbott Team providing HCP education and support for Primary Care within Notts ICB .....	5
<b>Dexcom Training for HCPs</b> .....	6
Training Options for Dexcom 1 and PWD onboarding overview for HCPs .....	6
Contact details for the Dexcom Team providing HCP education and support for Primary Care within Notts ICB.....	7
<b>Training on CGM for People Living with Diabetes</b> .....	8
Training Options for Freestyle Libre 2 for PWDs .....	8
Contact details for the Abbott Team providing support for Primary Care within Notts ICB .....	8
Training Options for Dexcom 1 and PWDs onboarding overview for PWDs.....	9
Contact details for the Dexcom Team providing support for Primary Care within Notts ICB.....	9
<b>Continuous Glucose Monitoring module via Cambridge Diabetes Education Programme (CDEP)</b> .....	11
<b>SNOMED Coding</b> .....	12

## Definitions

rtCGM	Real time continuous glucose monitoring
PWD	Person living with diabetes

# **Training on rtCGM for HCPs in Primary Care**

Healthcare professionals working in primary care can increase their knowledge of and confidence in continuous glucose monitoring (CGM) through an education package titled '**Implementing Glucose Sensing in Primary Care**' developed by EDEN (Effective Diabetes Education Now). This package was created in collaboration with Diabetes Technology Network-UK (DTN-UK) and Primary Care Diabetes Society (PCDS) in response to the latest NICE [NG17](#), [NG18](#) and [NG28](#) recommending wider access on the NHS to CGM for people living with diabetes.

The resources will help primary healthcare professionals increase their knowledge and confidence around CGM and consists of **five key education elements**:

1. Initial conversation piece and detailed core knowledge – video resources
2. Case studies for type 1 and type 2 diabetes – video and slide resources
3. Product training package, Abbott and Dexcom – e-learning
4. Implementation guide – web based
5. DTN-UK – additional learning

For more information and to undertake the training visit:

<https://www.glucose-sensing.com>

## Freestyle Libre 2 Training for HCPs

Online Modules are available on the Abbott Freestyle Academy. Register and login as a Healthcare Professional to access modules, videos, and webinars to match your learning objectives	<a href="https://progress.freestylediabetes.co.uk/sign-up">https://progress.freestylediabetes.co.uk/sign-up</a>
FreeStyle Libre 2 tutorial videos	<a href="https://pro.freestyle.abbott/uk-en/home/primary-care.html#primary-care-for-you">https://pro.freestyle.abbott/uk-en/home/primary-care.html#primary-care-for-you</a>
On Demand webinars: Topics such as: Understanding Time in Range, Spotlight on hypoglycaemia.	<a href="https://pro.freestyle.abbott/uk-en/home/primary-care.html#primary-care-for-you">https://pro.freestyle.abbott/uk-en/home/primary-care.html#primary-care-for-you</a>
FreeStyle UK and Ireland YouTube channel: 30+ tutorial and educational videos, playlists and webinars.	<a href="https://www.youtube.com/c/FreeStyleUKIreland/videos">https://www.youtube.com/c/FreeStyleUKIreland/videos</a>
EDEN modules are available specifically for primary care HCPs. EDEN is part of the Leicester Diabetes Centre	<a href="https://www.glucose-sensing.com/">https://www.glucose-sensing.com/</a>
The Association of British Clinical Diabetologists Diabetes Technology Network (ABCD DTN) produced a series of modules in 2019 on Freestyle Libre that are also free to access ( <i>note that Freestyle Libre 2 was launched after these videos were recorded</i> ). These modules take learning beyond device basics, towards clinical management of diabetes.	<a href="https://abcd.care/dtn-education/flash-glucose-monitoring">https://abcd.care/dtn-education/flash-glucose-monitoring</a>
There are some short tutorials on how to complete your individual practice setup and start to connect with your PWDs	<a href="https://pro.freestyle.abbott/uk-en/home/freestyle-portfolio/digital-health-solutions/libreview.html">https://pro.freestyle.abbott/uk-en/home/freestyle-portfolio/digital-health-solutions/libreview.html</a>
Sample sensors for use by HCPs for training purposes	<a href="https://freestylediabetes.co.uk/freestyle-libre/hcp-primary-care-order">https://freestylediabetes.co.uk/freestyle-libre/hcp-primary-care-order</a>

Abbott provide webinar sessions virtually or in-person, and the time required can be tailored to HCP availability and learning objectives. Attendees can select one or all sessions to meet their learning objectives and cover an introductory session (30mins), learning about glucose data session (45mins) and a review session with case studies and troubleshooting (45mins). Troubleshooting and Q&A sessions can also be provided on a 'drop in' basis.

# Setting Up LibreView in practices and PCNs

Abbott can support the set up LibreView for practices and PCNs so that the PWD, their Primary Care HCPs and consultant/DSNs in the integrated system can view the same glucose reports.

This will potentially enable HCPs in specialist services to discharge PWDs safely, and with a degree of 'oversight' for the PWDs and support for primary care colleagues who are involved in supporting the PWD with their diabetes in primary care.

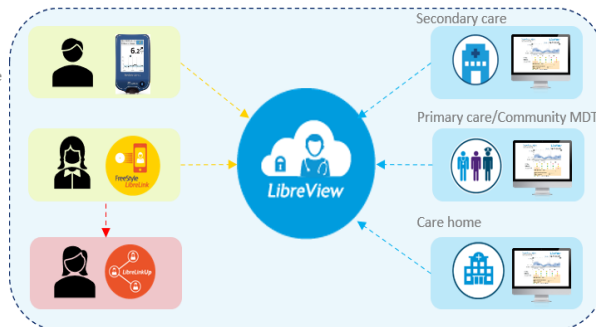
The digital ecosystem provides patients, caregivers and healthcare providers easy access to patient glucose data

## SCAN

Patients check their glucose using their phone or the FreeStyle Libre reader; their data is uploaded to LibreView.

## CONNECT

Caregivers can use an app to view their loved one's glucose data\*\*\*



## REVEAL

Healthcare providers can view patient glucose data using a secure, online portal enabling remote consultations\*\* This supports integrated care, allowing primary & secondary care teams to connect and view the same information.

Abbott provides a business intelligence service providing automated population summary reports from anonymized LibreView data downloads.

*Sensor-based glucose monitoring using the FreeStyle Libre system offers a complete glycaemic picture to help clinicians make more informed diabetes management decisions with patients, across both primary and secondary care<sup>1,2</sup>*

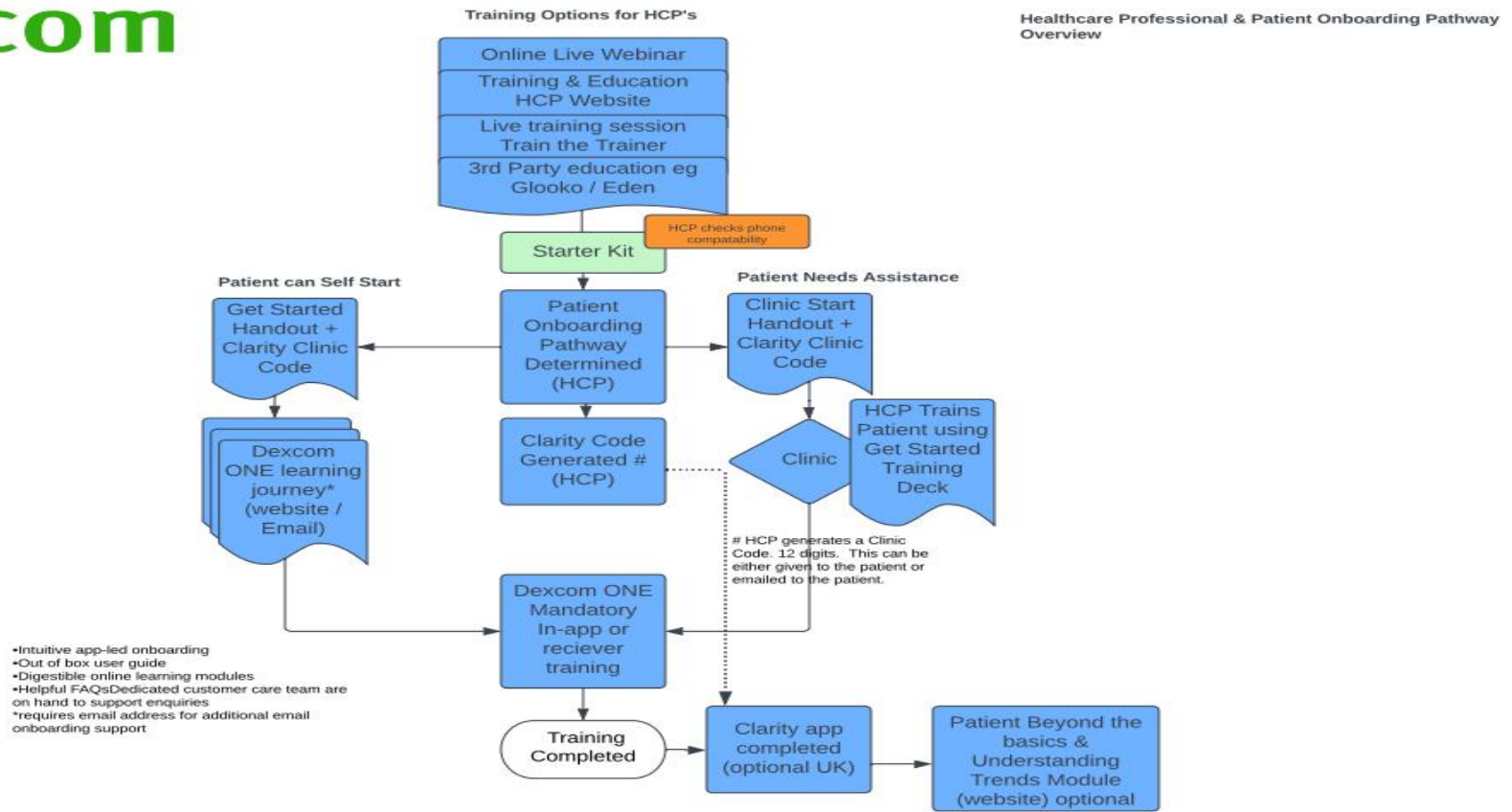
Contact details for the Abbott Team providing HCP education and support for Primary Care within Notts ICB

Joe Wheeler: Primary Care Territory Manager [Joseph.wheeler@abbott.com](mailto:Joseph.wheeler@abbott.com) Mobile Phone: 07880379712

Jody Foster: Medical Education Associate [Jody.foster1@abbott.com](mailto:Jody.foster1@abbott.com) Mobile Phone: 07776703075

# Dexcom Training for HCPs

Training Options for Dexcom 1 and PWD onboarding overview for HCPs



Education for HCP's on what CGM is, our clinical evidence and the Dexcom product range	<a href="https://uk.provider.dexcom.com/products/dexcom-one">https://uk.provider.dexcom.com/products/dexcom-one</a> <a href="https://uk.provider.dexcom.com/education-and-resources/clinical-evidence">https://uk.provider.dexcom.com/education-and-resources/clinical-evidence</a>
Dexcom One Webinar and training	<a href="https://uk.provider.dexcom.com/products/dexcom-one/training-and-resources">https://uk.provider.dexcom.com/products/dexcom-one/training-and-resources</a>
Frequently asked questions	<a href="https://uk.provider.dexcom.com/support/faqs">https://uk.provider.dexcom.com/support/faqs</a>
Clinic Resources for Dexcom one	Academy™   Glooko in Collaboration with the ABCD/DTN-UK
EDEN modules are available specifically for primary care HCPs. EDEN is part of the Leicester Diabetes Centre	<a href="https://www.glucose-sensing.com/">https://www.glucose-sensing.com/</a>
Glooko Academy ABCD	Academy™   Glooko in Collaboration with the ABCD/DTN-UK

Contact details for the Dexcom Team providing HCP education and support for Primary Care within Notts ICB

For all Primary Care & Community Teams – Becky Dooley (Territory Manager) – [rebecca.dooley@dexcom.com](mailto:rebecca.dooley@dexcom.com) – 07818 295832

Sarah Orme (Implementation Specialist) - [sarah.orme@dexcom.com](mailto:sarah.orme@dexcom.com) – 07747 539892

Dexcom Customer Care Line details: <https://www.dexcom.com/en-gb/contact-us-direct>

Customer Care - 0800 031 5761

Technical Support - 0800 031 5763

# Training on CGM for People Living with Diabetes

## Training Options for Freestyle Libre 2 for PWDs

<p>Training sessions with Freestyle Libre Academy- independently or with their practice as group sessions. These sessions can be supported by Abbott to provide the education and letters and training materials. A starter kit will be provided whether online or face to face training offered with 2 weeks supply of sensor. There is a follow up session which can be supported by a DSN from Abbott.</p>	<p><a href="http://freestylediabetes.co.uk">FreeStyle Progress - Abbott (freestylediabetes.co.uk)</a>            Contact Joseph Wheeler (details below) to discuss virtual or in person new PWD starter training clinic.</p>
<p>Foreign Language Materials</p>	<p><a href="https://freestylediabetes.co.uk/freestyle-libre/foreign-languages">https://freestylediabetes.co.uk/freestyle-libre/foreign-languages</a>             Go to the FreeStyle Libre 2 webpage of choice in any internet browser &gt; Go into the browser settings (usually 3 dots) &gt; search 'Languages' &gt; select their preferred language.</p>
<p>New Starter training video for FreeStyle Libre 2</p>	<p><a href="https://youtu.be/-e3yDD0vAlk">https://youtu.be/-e3yDD0vAlk</a></p>
<p>Practices can order sample sensors for new starters on FreeStyle Libre 2</p>	<p><a href="https://freestylediabetes.co.uk/freestyle-libre/patient-primary-care-order">https://freestylediabetes.co.uk/freestyle-libre/patient-primary-care-order</a></p>

Contact details for the Abbott Team providing support for Primary Care within Notts ICB

Joe Wheeler: Primary Care Territory Manager [Joseph.wheeler@abbott.com](mailto:Joseph.wheeler@abbott.com) Mobile Phone: 07880379712

Jody Foster: Medical Education Associate [Jody.foster1@abbott.com](mailto:Jody.foster1@abbott.com) Mobile Phone: 07776703075

**Abbott Order Enquires and Starter Kit Enquiries:** If you have any questions relating to your starter kit order please call [0345 607 3247](tel:03456073247) or email on [abbott.freestylelibre@nhs.net](mailto:abbott.freestylelibre@nhs.net)

**Abbott Customer Careline Team:** [0800 170 1177](tel:08001701177)

**Abbott Technical Support Team:** [0800 612 3006](tel:08006123006) (FreeStyle LibreLink app, FreeStyle LibreLink Up app and with LibreView).

**NHS Nottingham and Nottinghamshire**  
[notts.icb.nhs.uk/](http://notts.icb.nhs.uk/)



## Training Options for Dexcom 1 and PWDs onboarding overview for PWDs

Structured education including videos on the basics of rt-CGM, starting with Dexcom ONE through to understanding diabetes trends and sharing data with HCP's	<a href="https://www.dexcom.com/en-GB/learn-dexcom-one">https://www.dexcom.com/en-GB/learn-dexcom-one</a> .
The Dexcom Representatives and PWD Care Specialists will be available to host webinars for PWDs who have been unable to onboard themselves through the Dexcom ONE app.	Via app – contact Territory Manager Becky Dooley – <a href="mailto:rebecca.dooley@dexcom.com">rebecca.dooley@dexcom.com</a> – 07818 295832
PWD education from DEXCOM  Digestible online learning modules	<a href="#">Learn the basics</a> <a href="#">Ready to get started</a> <a href="#">Your first 10 days with Dexcom</a> <a href="#">Beyond the basics</a> <a href="#">Understand your Diabetes trends</a> <a href="#">DEXCOM ONE learn journey</a>

Contact details for the Dexcom Team providing support for Primary Care within Notts ICB

Contact details for the Dexcom Team providing support for Primary Care within Notts ICB

Becky Dooley (Territory Manager) – [rebecca.dooley@dexcom.com](mailto:rebecca.dooley@dexcom.com) – 07818 295832

Sarah Orme (Implementation Specialist) - [sarah.orme@dexcom.com](mailto:sarah.orme@dexcom.com) – 07747 539892

Dexcom Customer Care Line details: <https://www.dexcom.com/en-gb/contact-us-direct>

Customer Care - 0800 031 5761

Technical Support - 0800 031 5763

# Dexcom Clarity

Setting up Dexcom Clarity in Practices and PCNs

Dexcom can support the set-up Clarity for practices and PCNs so that the PWD, their Primary Care HCPs and consultant/DSNs in the integrated system can view the same glucose reports.

Dexcom Clarity allows healthcare professionals and patients to access clinically relevant glucose patterns, trends, and statistics via a range of interactive reports. Use of Dexcom CLARITY can facilitate better conversations about a patient's glucose insights during virtual or in-person visits.

Clinicians can set their Clarity account up here <https://clarity.dexcom.com/professional/registration>



## Interactive Reports

A variety of interactive reports can be viewed, saved, and printed for more targeted patient conversations and greater efficiency.



## Easy-to-Use Clinic Portal

Your patients' glucose data is accessible via an easy-to-use clinic portal, supporting a more simplified clinic workflow.



## Continuous Data Connection\*

No uploading, no problem. Glucose data from your patients' Dexcom CGM app is automatically\* sent to Dexcom CLARITY, for more streamlined data management without the hassle of manual uploading.†

For more information on Dexcom Clarity please visit <https://uk.provider.dexcom.com/products/dexcom-clarity>

# Continuous Glucose Monitoring module via Cambridge Diabetes Education Programme (CDEP)

CDEP is an online e-learning platform consisting of bite-sized diabetes training for healthcare staff. Each CDEP topic generates a CPD certificate and reflection document for revalidation and appraisal purposes as well as CDEP rewards.

Notts ICB has acquired licences to CDEP to ensure **FREE** access for local HCPs. Please see instructions below on how to register:



## HOW TO REGISTER:

- 1 Go to CDEP's website at [www.cdep.org.uk](http://www.cdep.org.uk) or scan your phone here:
- 2 Click on the link in the top right corner: SIGN IN/REGISTER
- 3 Under NEW CANDIDATE REGISTRATION, enter your EMAIL address and click CREATE ACCOUNT
- 4 Complete the rest of the registration form and you're all set!



For FREE access, enter the **REGISTRATION KEY CODE: NOTTSCCGCDEP**

\*If this code is not entered, you will not be able to access CDEP for free. Please [contact CDEP](#) if you need assistance.

# SNOMED Coding

Code	Term
1464621000000103	Intermittently scanned continuous glucose monitoring stopped (situation) / Flash glucose monitoring stopped
1464531000000102	Intermittently scanned continuous glucose monitoring declined (situation) / Flash glucose monitoring declined
1464571000000100	Referral for intermittently scanned continuous glucose monitoring (procedure) / Referral for flash glucose monitoring
1464651000000108	Discussion about intermittently scanned continuous glucose monitoring (procedure) / Discussion about flash glucose monitoring
1464551000000109	Provision of intermittently scanned minimally invasive interstitial fluid continuous glucose monitoring system (procedure) / Provision of flash glucose monitoring system
1464641000000105	Real-time continuous glucose monitoring stopped (situation) / Continuous glucose monitoring stopped
1464541000000106	Real-time continuous glucose monitoring declined (situation) / Continuous glucose monitoring declined
1464581000000103	Referral for real-time continuous glucose monitoring (procedure) / Referral for continuous glucose monitoring
1464661000000106	Discussion about real-time continuous glucose monitoring (procedure) / Discussion about continuous glucose monitoring
1464561000000107	Provision of real-time minimally invasive interstitial fluid glucose monitoring system (procedure) / Provision of continuous glucose monitoring system